

Origin of the Terradise Nature Preserve

Terradise is a word coined by Ray Romine to express finding “Heaven on Earth” in the eighteen acres that he and his wife Trella purchased from Marie Thomas in 1952. It had been a gift to her from her husband, Dr. Frank Thomas, who purchased it from Dr. Frederick Stengel in 1941. Originally a part of the extensive holdings of the Thew and Brocklesby families, it was an odd-shaped piece of land that had never been developed and contained virgin trees and vegetation. Ray lived only a year at Terradise when he died in August 1954.

Trella learned that since it was one of the few areas where the river was accessible from the road it had been used as common fishing ground. She felt that once again it should be approachable by the public and preserved for future generations to enjoy. The Marion County Park District was established in 1998 to receive as a gift from Trella and her children, Kathi and David Haldeman the twelve acres on the left bank of the Whetstone River. Trella has retained the six acres where she and Ray built their home in 1953 and where she still lives. She welcomes guests to tour her gardens at the annual Open Garden the last Sunday in April.

Most of the area is on the flood plain. The ox-bow of a former river channel is replenished by floods and is home to nesting wood ducks. Over 100 species of birds have been identified at Terradise. These include Carolina chickadees, woodpeckers (downy, hairy and red bellied) tufted titmice, white breasted nuthatches, goldfinches, cardinals, blue jays, juncos and doves. Many of these ten “regulars” can be spotted from the shelter house by the parking lot. The spring migration in early May is when the most species can be seen.

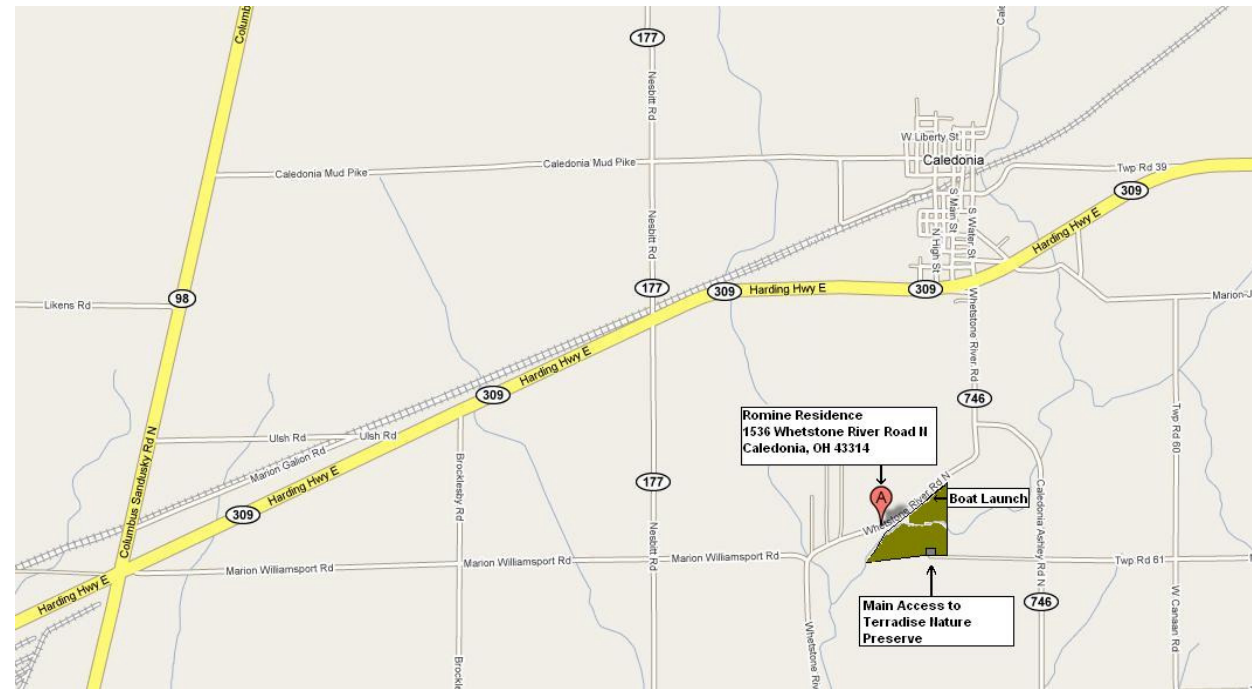
Terradise Nature Preserve



Welcome to the Terradise Nature Preserve. May your visit here be pleasant as you enjoy a walk through the woods along the Whetstone (Olentangy) River. In the winter you will find animal tracks to identify. In the spring wildflowers abound. During the summer nearly 40 species of trees and shrubs can be identified by their leaves. On a crisp autumn day you will see walnuts and hickory nuts on the ground.

The lane to the river was originally the Marion-Williamsport Road that forded the river at the bend. Men on horseback and even wagons crossed easily, but when the 1913 flood altered the course of the river, and automobiles were becoming common, the ford became impassible and the road was abandoned. Now it is the lane that continues in a trail that circles the Terradise Nature Preserve. It is also the southern boundary of the Preserve.

The main preserve area is accessed from State Route 746 south of Caledonia at the dead end of the Marion Williamsport Road. The Junior River Patrol Boat launching parking lot is located east of the Romine home at 1536 Whetstone River Road North.



Open dawn to dusk all year.
This brochures is free – please recycle for others to use or keep as a souvenir of your visit.
Paths are marked with pink flags.
No motorized vehicles on lane or paths.
Don't pick the posies:
They may be rare even though you see many growing here

How You Can Contribute

Friends of Prairie Parks is the volunteer support group of the Marion County Parks. Members participate by leading tours, clearing fallen timbers and maintaining trails. To join, or for information on events, contact Karen Kelley, Director of the Marion County Park District at (740) 223-4161 or check the web at www.marioncountyparks.info.



Volunteers Helping Out

Terradise Nature Preserve is supported by the Terradise Nature Preserve Endowment fund managed by the Marion Community Foundation. Your financial support to this fund will ensure that the TNP will be maintained for future generations. Contact Brad Bebout at the Marion Community Foundation (740) 387-9704.

Trees, Shrubs and Vines

These lists were compiled from detailed studies but may not be complete

Ash	
White	<i>Fraxinus americanus</i>
Green	<i>F. Pennsylvania</i>
Basswood	
American.....	<i>Tilia americanua</i>
Beech, American.....	<i>Fagus grandifolia</i>
Box Elder	<i>Acer negundo</i>
Buckeye, Ohio	<i>Aesculus glabra</i>
Bladdernut	<i>Staphylea trifolia</i>
Buttonbush	<i>Cephalanthus occidentalis</i>
Cherry	
Black	<i>Prunus nigra</i>
Choke	<i>P. virginiana</i>
Cottonwood	<i>Populus deltoids</i>
Crabapple	<i>Malus coronaria</i>
Dogwood	
Red Oiser	<i>Cornus stolonifera</i>
Elderberry	<i>Sambucus canadensis</i>
Elm	
American	<i>Ulmus americana</i>
Slippery	<i>U. rubra</i>
Hackberry	<i>Celtis occidentalis</i>
Hawthorn species.....	<i>Crataegus</i>
Maple	
Black	<i>Acer nigrum</i>
Silver	<i>A. saccharinum</i>
Sugar	<i>A. saccharum</i>
Hickory	
Bitternut.....	<i>Carya cordiformis</i>
Shellbark	<i>C. laciniosa</i>
Locust, Honey	<i>Gleditsia triacanthos</i>
Osage Orange	<i>Maclura pomifera</i>
Pawpaw.....	<i>Asimina triloba</i>
Spicebush.....	<i>Lindera bensoin</i>

Sycamore	<i>Plantus occidentalis</i>
Virginia Creeper	<i>Parthenocissus quinquefolia</i>
Wahoo.....	<i>Euyonomous atropurpureus</i>
Walnut. Black	<i>Juglans nigra</i>
Wild Grape	<i>Vitis species</i>
Willow, Black.....	<i>Salix nigra</i>



A Walk in the Woods

A Representative List of Herbacious Plants

Agastachia species	<i>Agastachia</i>
Aster species	<i>Aster</i>
Bellflower, tall	<i>Campanula americana</i>
Bellwort	
perfoliated	<i>Uvularia perfoliata</i>
Buttercup.....	<i>Ranunculus species</i>
Cinquefoil species.....	<i>Cinquefoi</i>
Clearweed.....	<i>Pilea pumila</i>
Cleavers	<i>Galium aperine</i>
Corn salad.....	<i>Valerianella olitoria</i>
Cucumber, wild	<i>Echinocytis lobata</i>
Dutchman's Breeches ..	<i>Dicentra cucularia</i>
Geranium, wild	<i>Geranium maculatum</i>
Gill over the ground	<i>Glechoma hederacea</i>
Ginger, wild	<i>Asarum canadense</i>
Golden ragwort.....	<i>Senecio ureus</i>
Fleabane, daisy	<i>Erigeron annus</i>

Harbinger of Spring	<i>Erigenia bulbosa</i>
Horse nettle.....	<i>Solanum carolinense</i>
Honewort	<i>Cryptataenia Canadensis</i>



Wild Hyacinth *Camassia scilloides*

Hyacinth, wild	<i>Camassia scilloides</i>
Jack in the Pulpit	<i>Arisaema atrotubens</i>
Loosestrife, fringed.....	<i>Lysimachia ciliate</i>
May Apple	<i>Podophyllum peltatum</i>
Mustard, hedge	<i>Sisymbrium officinale</i>
Nightshade	<i>Solonum dulcamaara</i>
Nettles, stinging.....	<i>Urtica dioica</i>
Petunia, smooth	<i>Ruellia carolinienses</i>
Phlox, wild blue.....	<i>Phlox divaricata</i>
Poison Ivy	<i>Rhus radicans</i>
Pokeweed.....	<i>Phytolacca Americana</i>
Smilacina	<i>Smilacina trifolia</i>
(False Solomon's Seal)	
Smilax	<i>Smilax hispida</i>
Solomon's Seal	<i>Poloygonatum bilflor</i>
Spring Beauty	<i>Claytonia virginica</i>
Sprekalia.....	<i>Sprekalia</i>
Spring Cress	<i>Cardimine bulbosa</i>
Sweet cicely	<i>Osmorhiza claytoni</i>
Toothwort,	
Cutleaf.....	<i>Dentaria laciniata</i>
two leaf	<i>D. diphylla</i>
Jewelweed	

Pale.....	<i>Impatiens pallida</i>
Spotted.....	<i>I. carpensis</i>
Trillium	
Great white	<i>Trillium grandiflora</i>
Toad	<i>T. sessile</i>
Drooping	<i>T. flexipes</i>
Trout Lily	
White	<i>Erythronium alba</i>
Yellow	<i>E. americanum</i>
Venus looking glass	<i>Specularia perfoliata</i>



Virginia Bluebells

.....	<i>Mertensia virginica</i>
Violets	
Canada.....	<i>Viola canadensi</i>
Purple.....	<i>V. papilionacea</i>
Waterleaf	
Broadleaf	<i>Hydrohyllum macrophyllum</i>
Virginia.....	<i>H. virginianum</i>
Wingstem	<i>Actinormaris alternifolia</i>